

# Third Annual Conference

## Current Issues in Human Rights' Law and Practice

Monday, 8 December 2008  
Royal College of Surgeons, London



Kandinsky, Wassily (1866-1944): Improvisation No.29 (The Swan), 1912. Philadelphia, Philadelphia Museum of Art. The Louise and Walter Arensberg Collection, 1950. ©2005. Photo The Philadelphia Museum of Art/Art Resource/Scala, Florence



Hosted by Queen Mary, University of London, Eversheds  
and British Institute of International and Comparative Law

The conference will participate in the CPD scheme

# Conference Programme

## Conference Chair

**Professor Maurice Mendelson QC**

8.30am

Registration and coffee

9am

## Opening addresses

Professor Maurice Mendelson QC, Blackstone Chambers  
Professor Malgosia Fitzmaurice, Queen Mary, University of London

9.20am

## Session 1: The European Convention on Human Rights and Fundamental Freedoms, The UK Human Rights Act: 10 Years On

**Chair:** James Crawford SC, FBA, Director of the Lauterpacht Centre, University of Cambridge, Whewell Professor of International Law and a Fellow of Jesus College, University of Cambridge, Matrix Chambers

### Topics

- Judicial Deference and Restraint under the HRA: Why Judges can swim at the very deep end of the pool (without risk of drowning)
- The UK Human Rights Act: 10 Years On
- Should human rights law apply extraterritorially? A critical appraisal of what the leading HRA case on extraterritoriality – *Al Skeini* – had to say on this question
- Human Rights and Investment Arbitration

### Speakers

- Professor Dominic McGoldrick, Director of The International & European Law Unit, University of Liverpool
- Dr George Letsas, UCL
- Professor Conor Gearty QC, LSE, Matrix Chambers,
- Dr. Ralph Wilde, UCL
- Professor Ursula Kriebaum, University of Vienna

11.30am

Coffee Break

12pm

## Session 2: The EU, The ECJ and the European Court of Human Rights: New Trends and New Challenges

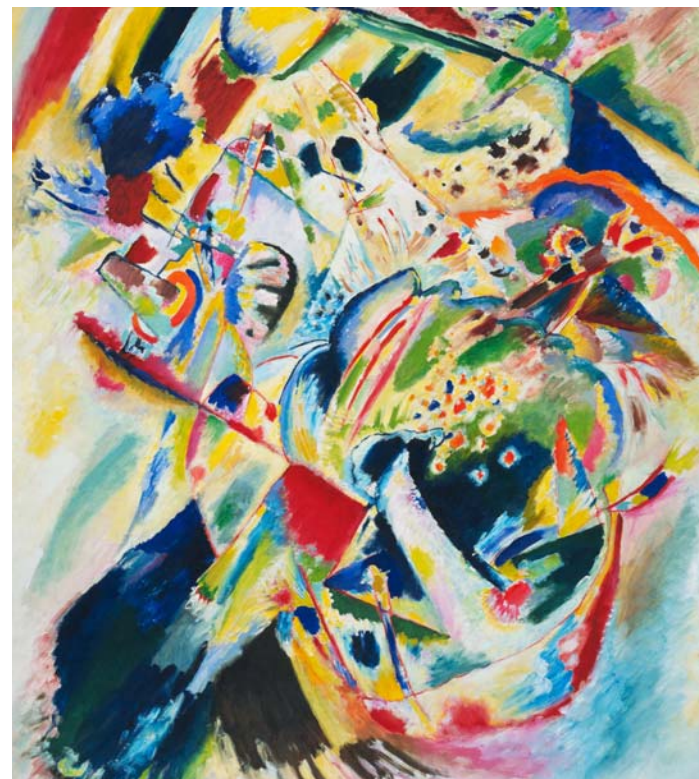
**Chair:** His Excellency Judge Christos Rozakis, Vice-President of the European Court of Human Rights

### Topics

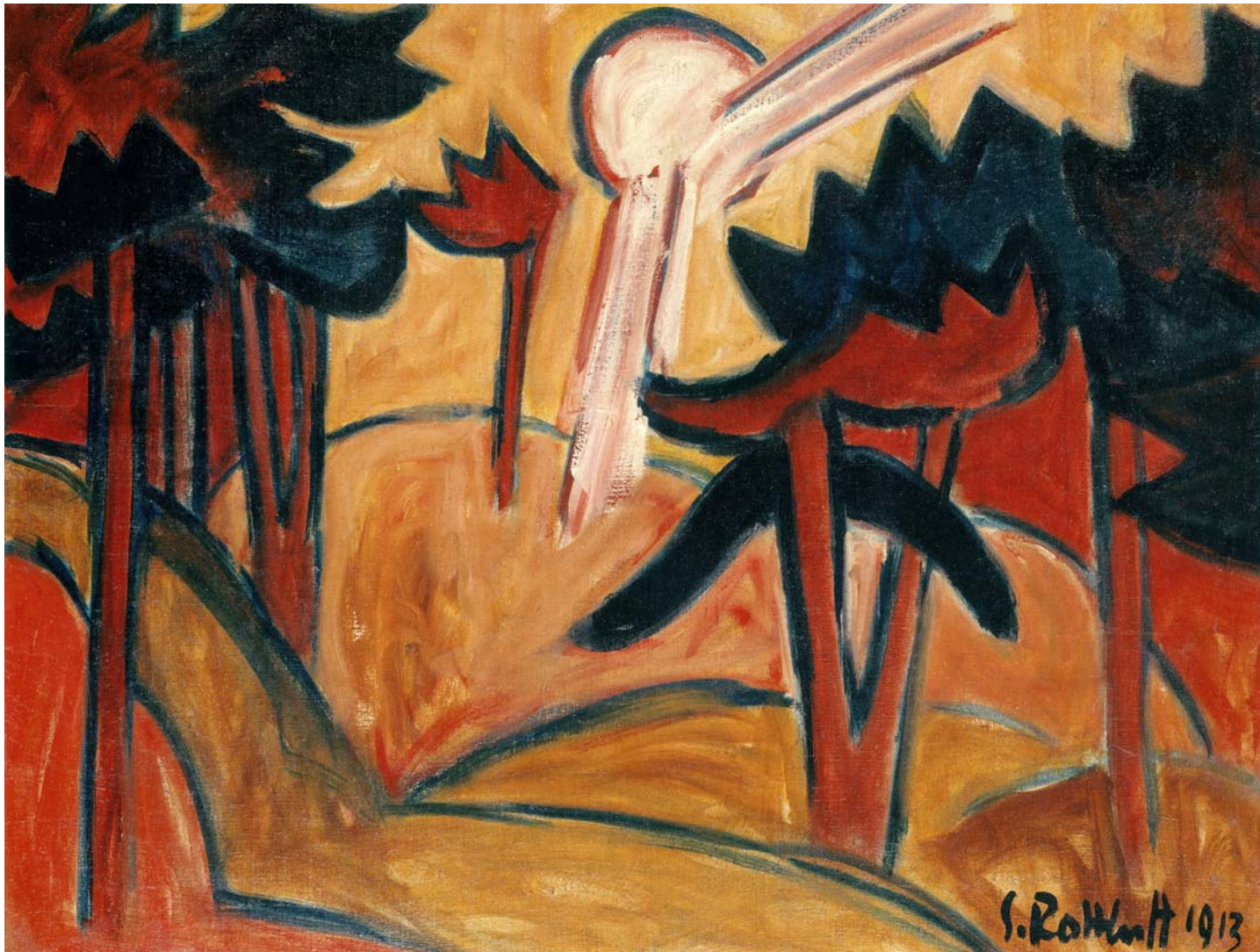
- Security Council's and EU blacklists before the European Courts: freedom, security or both?
- International law, EU law and the fight against terrorism. The Judiciary in distress
- Human rights, trade and the environment – approaches in the European Court of Justice

### Speakers

- Professor Linos-Alexandros Sicilianos, University of Athens
- Professor Takis Tridimas, Queen Mary, University of London, Penn State Dickinson School of Law, Matrix Chambers
- Mr Maurice Sheridan QC, Matrix Chambers



Kadinsky, Wassily (1866-1944): Panel for Edwin R. Campbell No.4, 1914. New York, Museum of Modern Art (MoMA). Nelson A. Rockefeller Fund (by exchange). 299.1983. ©2008. Digital image, The Museum of Modern Art, New York/Scala, Florence



Schmidt-Rottluff, Karl (1884-1976): Sun in the Fir Wood, 1913. Madrid, Thyssen-Bornemisza Museum. ©1990. Photo Scala, Florence

1.15 pm

Lunch

2.30 pm

### Session 3: Human Rights, Commercial Law and Due Processes

**Chair:** Professor Gudmundur Alfredsson, Advisor to the Director of the Raoul Wallenberg Institute for Human Rights and Humanitarian Law, Professor of International Law, University of Lund

#### Topics

- Corporations Actions Aboard and Human Rights Responsibilities

#### Speakers

- Mr Stewart Shackleton, Partner, Eversheds
- Professor Robert McCorquodale, Director of the British Institute of International and Comparative Law
- Professor Gunther Handl, Tulane University
- Mr Tim Eicke, Essex Court Chambers

4.15 pm

Tea

## Session 4: Human Rights and Terrorism

**Chair:** Professor Geir Ulfstein, University of Oslo

### Topics

- Torture and other crimes of interrogation: issues of individual responsibility

### Speakers

- Clare Ovey, Head of Division, European Court of Human Rights
- Professor Philippe Sands QC, UCL, Matrix Chambers
- Mr Raza Husain QC, Matrix Chambers

6.15 pm

## Closing Remarks

Mr Stewart Shackleton, Partner, Eversheds

Dr. Phoebe Okowa, Queen Mary, University of London

7.00 pm

Dinner

### After Diner Speaker:

Mr Ben Emmerson, QC Matrix Chambers



Schmidt-Rottluff, Karl (1884-1976): Forest. 1921. Hamburg, Hamburger Kunsthalle. Inv. 2830 Photo: Elke Walford. ©2005. Photo Scala, Florence/BPK, Bildagentur fuer Kunst, Kultur und Geschichte, Berlin

# Information and registration form

## CPD

The Conference has been accredited by the Law Society of England and Wales. If CPD accreditation is required by delegates for other organisations, we will be pleased to supply a Certificate of Attendance. Please request this on the application form.

## Fees

A fee of £150 (for registration on or prior to 1st December 2008) or £200 (for registration after 1st December) covers conference attendance and materials, two coffee breaks and lunch. Registration is completed with payment.

Membership rate applies for BIICL members (£90 for registration on or prior to 1st December 2008 and £120 for registration after 1st December 2008)

Student rate £30

Dinner - £50

## Venue

Royal College of Surgeons, Lincoln's Inn Fields [www.rcseng.ac.uk/about/find.html](http://www.rcseng.ac.uk/about/find.html)

## Cancellation/substitutes

In the event of you cancelling your attendance at any time after your application has been accepted, a cancellation charge of £75 will apply. You may send a substitute if you notify us at least five days in advance of the conference.

## Details

First name: \_\_\_\_\_ Family name: \_\_\_\_\_

Title: \_\_\_\_\_

Position: \_\_\_\_\_ Company: \_\_\_\_\_

Address: \_\_\_\_\_

City/postcode: \_\_\_\_\_ Country: \_\_\_\_\_

Tel: \_\_\_\_\_ Fax: \_\_\_\_\_

email: \_\_\_\_\_

## Conference registration

Certificate of Attendance required

Registration on or prior to 1st December £150

Registration after 1st December £200

BIICL members - Registration on or prior to 1st December £90

BIICL members - Registration after 1st December £120

Dinner £50

Total £ \_\_\_\_\_

## Method of Payment

Cheques must be in GB Pounds made payable to Queen Mary, University of London. Please write LAW9980B/1283 on the back of the cheque. Please note, Queen Mary is not able to accept payment by American Express or Diners Club.

Credit Card (will incur a two per cent charge)  Debit Card  Cheque

### Card details

Card number: \_\_\_\_\_ Issue No.: \_\_\_\_\_

Expiry date: \_\_\_\_\_ Authorisation code: \_\_\_\_\_

Name of cardholder \_\_\_\_\_

Billing address (if different from above): \_\_\_\_\_

Signature: \_\_\_\_\_ Date: \_\_\_\_\_

## Please return the registration form and your payment to:

Mrs Janette Monk, Department of Law, Queen Mary, University of London, Mile End Road, London, E1 4NS UK  
Tel: +44(0)20 7882 5139 Fax: +44(0)20 8981 8733 email: [j.a.monk@qmul.ac.uk](mailto:j.a.monk@qmul.ac.uk)

---

# Initiative on Commercial Law and Public International Law

Following its 2006 inaugural conference on treaty interpretation, this is the third annual conference organised under the auspices of the Initiative on Commercial Law and Public International Law. The aim of the Initiative is to facilitate an exchange of views and opinions among judges, academics, practitioners and students on the increasingly important and complex relations between commercial law and public international law.

Specific objectives of the Initiative are:

- to promote awareness of practical legal solutions that public international law may offer in commercial and economic relations
- to monitor and explore the growing use of public and international norms in economic and commercial relations
- to encourage the study of issues of public international law and commercial relations

In pursuit of these objectives, a continuing activity of the Initiative will be to organise a conference each year on a relevant topic.

**The Initiative Committee**

Professor Malgosia Fitzmaurice  
Mr Stewart Shackleton  
Mrs Janette Monk  
Mr Panos Merkouris