

**ANNUAL CONFERENCE 2011**  
**FINANCIAL REGULATION IN A GLOBAL MARKET:  
MOVING BEYOND THE STATE**

**Friday 10 June 2011, 9.30-17.30**

**Venue: London House, Goodenough College,  
Mecklenburgh Square, Bloomsbury, London WC1N 2AB**

**CPD hours may be claimed by both solicitors and barristers  
through attendance at this event**



**Topics include:**

- **Investment Law**  
International Investment Law in the Age of Sovereign Wealth Funds
- **Financial Services Law**  
Supervisory Structure – Does it matter?
- **EU Law**  
Combating Cross-Border Financial Crime in the EU
- **Islamic Law**  
Islamic Finance & Financial Regulations
- **Competition Law**  
Competition Policy, State Aid & Financial Institutions
- **Private International Law**  
Financial Regulation Hitting the Reality of Private Cross-Border Regulations
- **Public International Law**  
International Regulation of Bribery and Corruption
- **International and Comparative Law**  
Aspects of Financial Regulation

**Sponsored by:**



**Directions to the conference venue:**

London House  
Goodenough College  
Mecklenburgh Square  
Bloomsbury  
London WC1N 2AB

**Train:**

Nearest mainline stations are King's Cross and Euston

**Tube:**

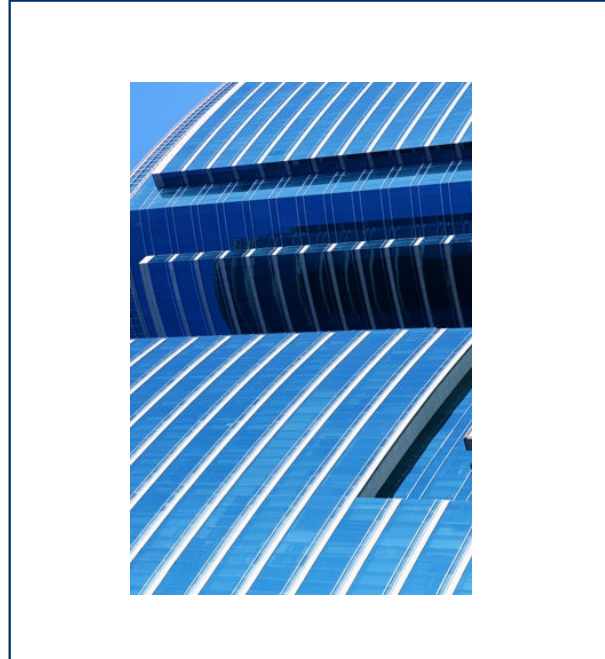
Russell Square (5 mins walk), King's Cross (10 mins walk), Chancery Lane (10 mins walk), Holborn (10 mins walk) and Euston (20 mins walk).

From King's Cross: Tube Station: go out of Gray's Inn Road exit (near the Hammersmith and City entrance), and turn left. Follow Gray's Inn Road for about 400 metres until you reach Heathcote Street on the right. Turn right into Heathcote Street and then immediately left into Mecklenburgh Street. William Goodenough House will be the first main building on the right, the Goodenough Club is 50 metres up the road on the left-hand side, and London House is past the gardens on the right.

From Russell Square: Tube Station: turn right out of the station and go down to the roundabout. After 50 metres the road bends round to the right and 50 metres further on turn left at the T-junction onto Culliford Street. After 200 metres take the first left at Mecklenburgh Place and follow the road. London House is on your right. Follow the gardens around and the Goodenough Club is about 200 metres on the right-hand side. William Goodenough House is past the gardens on the left.

**Hotels:**

Receive discounted rates at The Montague on The Gardens Hotel, London WC1; Goodenough Club, London WC1, Grange Holborn Hotel, London WC1; Grange Clarendon Hotel, London WC1, Grange Blooms, WC1.



**Pricing:**  
**ALL FULL DAY NON-MEMBER FEES INCLUDE ONE  
YEAR'S ONLINE MEMBERSHIP OF THE BRITISH  
INSTITUTE OF INTERNATIONAL AND  
COMPARATIVE LAW**

**Full Day Rate**

	<b>Non-Member</b>	<b>Member</b>
<b>Individual:</b>	£260	£100
<b>Full-time Academic:</b>	£180	£70
<b>Full-time Student:</b>	£61	£25

**Half Day Rate**

**Please note that these rates do NOT include membership to the Institute**

	<b>Non-Member</b>	<b>Member</b>
<b>Individual:</b>	£170	£60
<b>Full-time Academic:</b>	£100	£50
<b>Full-time Student:</b>	£45	£20

**Event Cancellation Policy**

**Cancellation by us**

The British Institute of International and Comparative Law reserves the right to modify or cancel any event if unforeseen circumstances arise. If we cancel an event we shall inform you as soon as possible using the contact details provided to us and offer you a full refund.

**Cancellation by you**

All cancellations must be made in writing via email to [eventsregistration@biicl.org](mailto:eventsregistration@biicl.org) and be no less than one week prior to the event.

Payment for registration will always be required, and must be made prior to the event. If sufficient written notification of cancellation is received, a full refund will be given. If insufficient notice is given, payment for your registration will still be required.

By registering for an event, you have confirmed that you have read and understood our cancellation policy.

To unsubscribe from receiving information on events, please email  
[eventsregistration@biicl.org](mailto:eventsregistration@biicl.org)

[www.biicl.org](http://www.biicl.org)

For further information please visit our website  
email: [eventsregistration@biicl.org](mailto:eventsregistration@biicl.org)

Telephone: 020 7862 5151 Fax: 020 7862 5152

Charity number: 209425

# Conference Programme

8.30 - 9.00	<b>Registration</b>
9.00 - 9.15	<b>Welcome:</b>  <b>Professor Robert McCorquodale</b> , Director, British Institute of International and Comparative Law <i>Venue: The Large Common Room</i>
9.15 - 10.00	<b>Keynote Address</b> <b>Chair: Dame Rosalyn Higgins DBE QC</b> , President and Chairman, British Institute of International and Comparative Law <b>Keynote Speaker:</b> <b>Rosa Lastra</b> , Queen Mary University of London
10.00 - 10.30	<b>Morning Tea/Coffee</b> <i>Venue: The Great Hall</i>
10.30 - 12.00	<b>Session One - Panel One</b> <b>Investment Panel</b> <b>International Investment Law in the Age of Sovereign Wealth</b> <i>Venue: The Large Common Room</i>  <b>Chair: N Jansen Calamita</b> , Senior Research Fellow in International Trade and Investment Law and Director, Investment Treaty Forum <b>Speakers:</b> <b>Professor Julien Chaisse</b> , The Chinese University of Hong Kong <b>Professor Gordon Clark</b> , Oxford University <b>David Caukrodger</b> , OECD Directorate & Financial Enterprise Affairs <b>Michael Nolan</b> , Milbank, Tweed, Hadley & McCloy LLP (Washington) & Georgetown University Law Centre
	

10.30 - 12.00	<b>Session One - Panel Two</b> <b>Financial Services Law</b> <b>Supervisory Structure - Does it matter?</b> <i>Venue: The Churchill Room</i> <b>Chair: Clive Briault</b> , Risk and Regulation Consulting Ltd <b>Speakers:</b> <b>Professor Kern Alexander</b> , University of Zurich <b>Patrick Starkman</b> , AMF, France <b>Nick Weinreb</b> , NYSE Euronext <b>Jane Welch</b> , British Institute of International and Comparative Law
12.00 - 12.45	<b>Lunch</b> <i>Venue: The Great Hall</i>
12.45 - 14.15	<b>Session Two - Panel One</b> <b>EU Law</b> <b>Combating Cross-Border Financial Crime in the EU</b> <i>Venue: The Churchill Room</i> <b>Chair: Ros Wright CBE, QC</b> , Fraud Advisory Panel <b>Speakers:</b> <b>Detective Superintendent Robert Wishart</b> , City of London Police <b>Stephen Gentle</b> , Kingsley Napley LLP <b>Glyn Powell</b> , Serious Fraud Office <b>Carlo van Heuckelom</b> , Europol
12.45 - 14.15	<b>Session Two - Panel Two</b> <b>Islamic Law</b> <b>Islamic Finance &amp; Financial Regulations</b> <i>Venue: The Large Common Room</i> <b>Chair: Justice William Blair</b> , High Court <b>Speakers:</b> <b>Richard De Belder</b> , SNR Denton <b>Malik Dahlan</b> , Quraysh Institution <b>Michael McVillien</b> <b>Huma Sodher</b> , PhD Candidate, Bangor University
14.15 - 14.45	<b>Afternoon Tea/Coffee</b> <i>Venue: The Great Hall</i>

14.45 - 16.15	<b>Session Three - Panel One</b> <b>Competition Law</b> <b>Competition Policy, State Aid &amp; Financial Institutions</b> <i>Venue: The Churchill Room</i> <b>Chair: Peter-Carlo Lehrel</b> , FIPRA <b>Speakers:</b> <b>Diane Coyle OBE</b> , Enlightenment Economics and Former Advisor to the UK Treasury <b>Christian Ahlborn</b> , Linklaters LLP <b>Luis Correia da Silva</b> , Oxera
14.45 - 16.15	<b>Session Three - Panel Two</b> <b>Private International Law</b> <b>Financial Regulation Hitting the Reality of Private Cross-Border Relations</b> <i>Venue: The Large Common Room</i> <b>Chair: Joanna Perkins</b> , Bank of England <b>Speakers:</b> <b>Peter Werner</b> , ISDA <b>Professor Francisco Garcimartin Alferez</b> , University Rey Juan Carlos <b>Professor Matthias Lehmann</b> , University of Halle-Wittenberg
16.15 - 17.45	<b>Session Four - Panel One</b> <b>Public International Law</b> <b>International Regulation of Bribery and Corruption</b> <i>Venue: The Large Common Room</i> <b>Chair: David Roberts</b> , Dagero Ltd (International Business Advice) <b>Speakers:</b> <b>Nick van Benschoten</b> , Department for Business, Innovation and Skills <b>Professor John Hatchard</b> , The Open University and Commonwealth Legal Education Association <b>Christine Uriarte</b> , Organisation for Economic Co-operation and Development
16.15 - 17.45	<b>Session Four - Panel Two</b> <b>International and Comparative Law Aspects of Financial Regulation</b> <i>Venue: The Churchill Room</i> <b>Speakers:</b> <b>John Biggins</b> , Centre for Regulation & Governance, UCD <b>Dr Iwa Salami</b> , University of East London <b>Lorenzo Sasso</b> , LSE & Me Nicolette Kost de Sèvres <b>Andrea Saldarriaga</b>
17.45 - 18.30	<b>Drinks Reception</b>